

# SMALL CULVERT

---

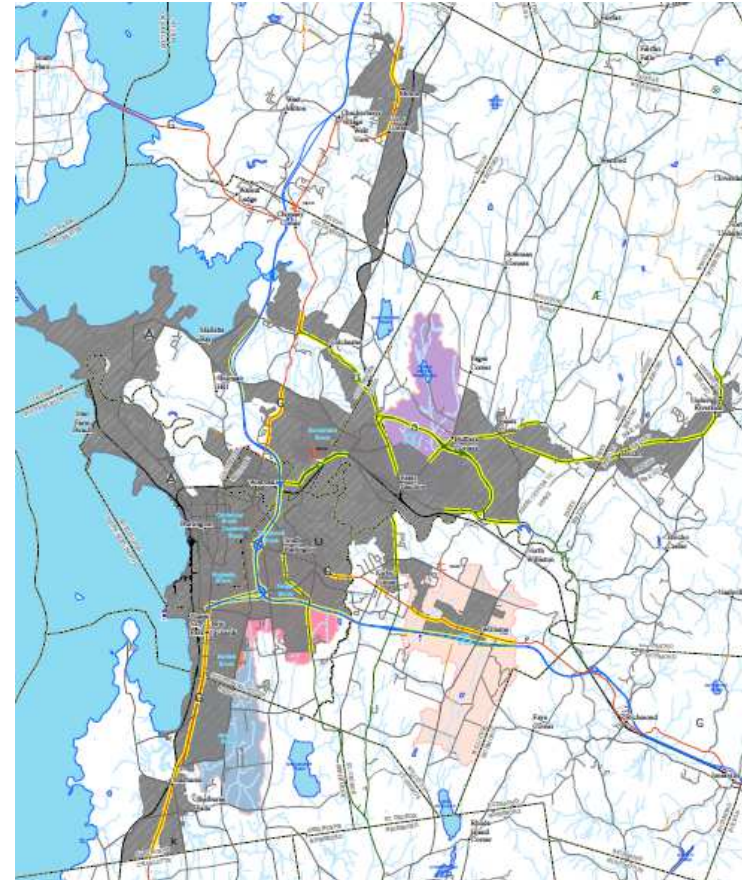
## Ultrashort Inventory and Inspection

Kevin Viani  
Data Management Supervisor  
2/11/2015



# EPA Regulations

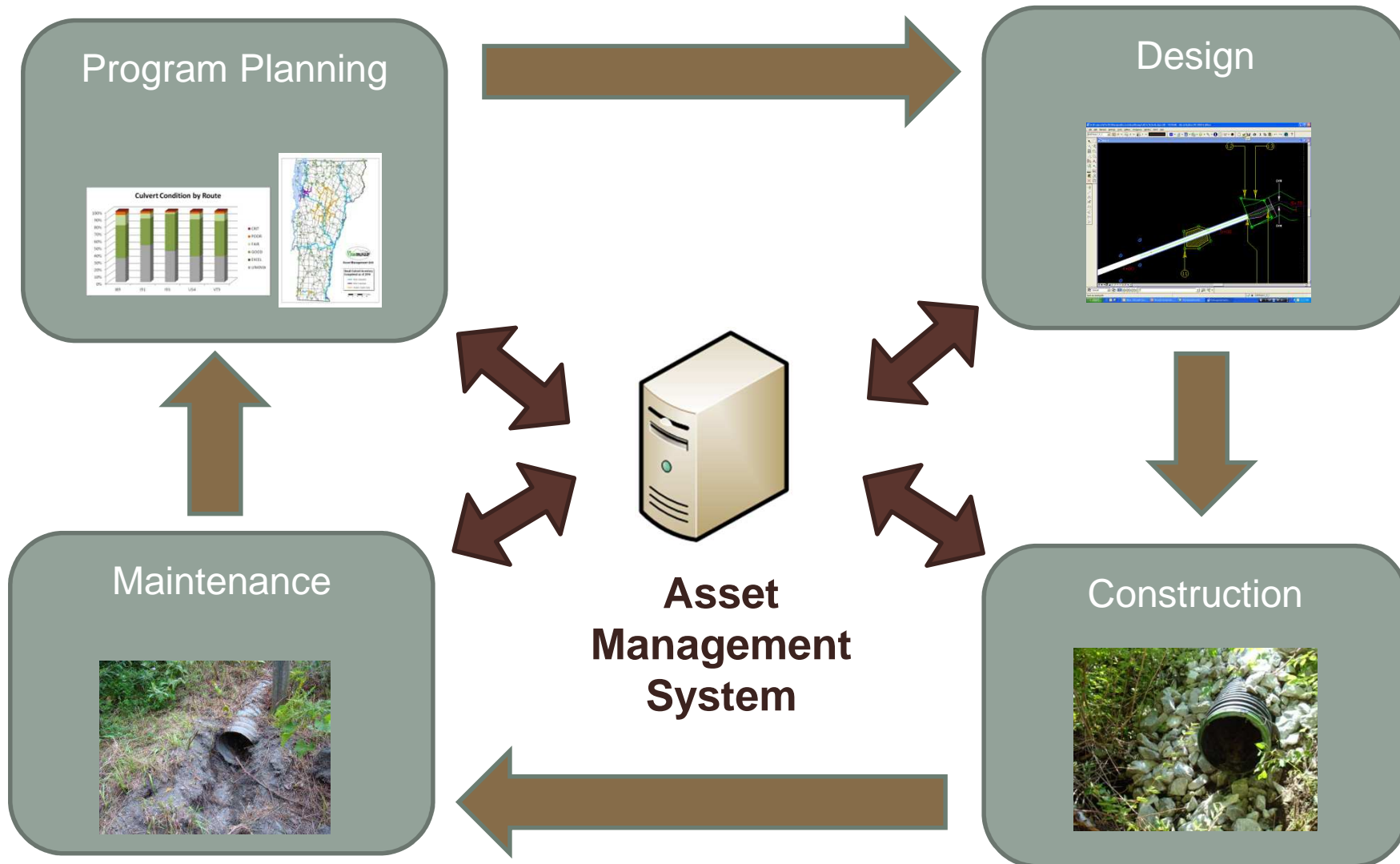
- MS4 Project (2003)
  - 63 miles of State Highway
  - Collection of hard and soft asset



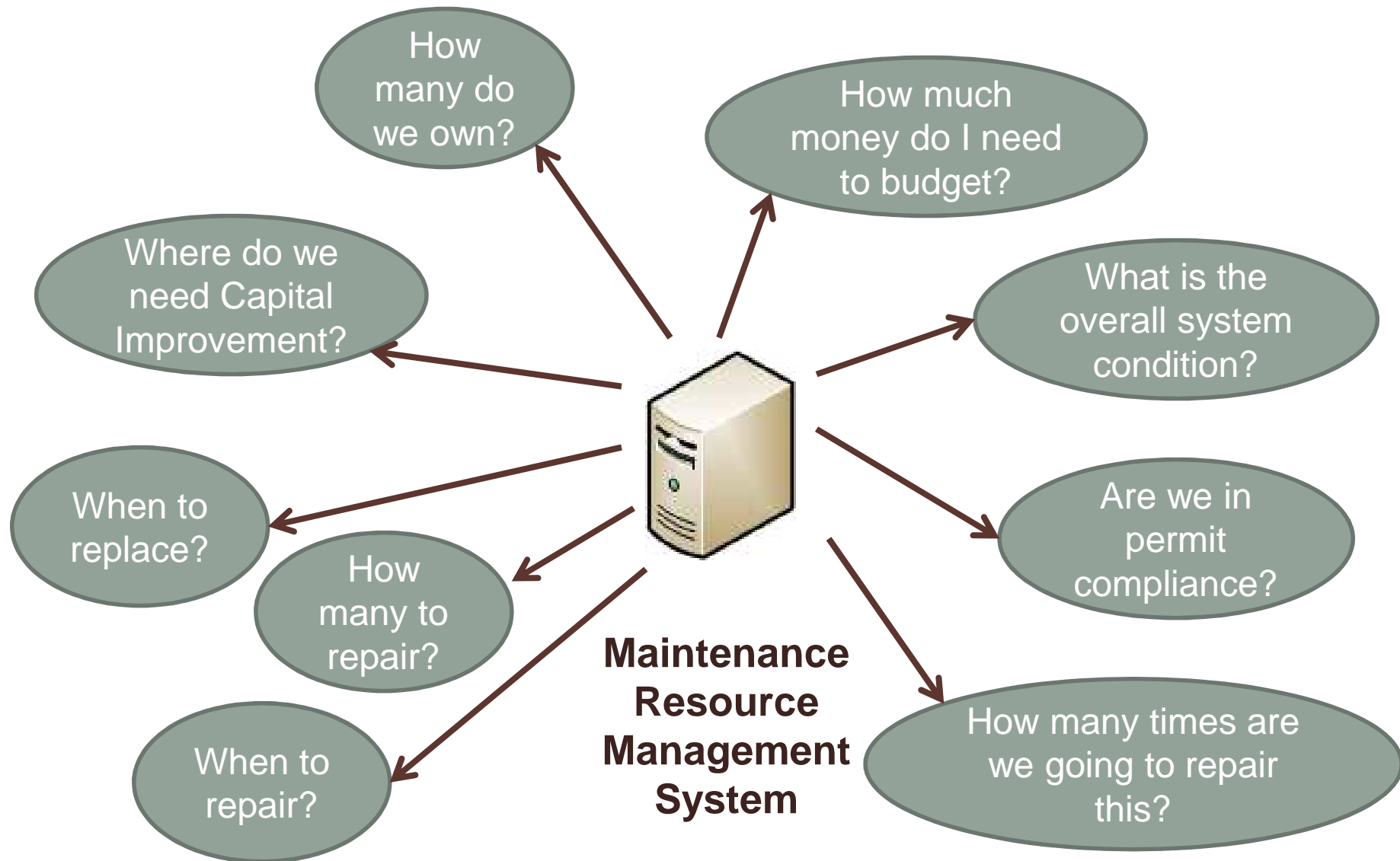
# Infrastructure Needs



# Asset Life Cycle



# Centralized Reporting Framework



# Small Culvert Inventory

- 72" or less in Diameter
- State Maintained System
- Recording
  - Location
  - Structure Type
  - Conditional Inspection



# Maintenance Tracking

MATS - [Asset - U002 DANVILLE 1.079 - PID 9320]

File Edit Delcan Functionality Admin Incident Rideshare Assets Training P & B Route Event Work Reporting Work Request Reports

Exit Open Print Save Insert Retrieve Export Report Help DWR List

Unit: 1740 - HWY MOB Maintenance St. Johnsbury Description: U002 DANVILLE 1.079 - PID 9320 Begin Town: 0303 - Danville

Asset Sys Id: 225086 Parent Asset: - End Town: 0303 - Danville

Asset Group: Culverts Asset Type: Culvert Array - Culvert Array Begin MM: 1.079

Display Code: 9320 Route: 20 - US 2 End MM: 1.079

Core Map Culvert - Inlet Culvert - Outlet Culvert - Barrel Permits Tab Association DWR Usage Work Requests

Owning Unit: 1740 - HWY MOB Maintenance St. Johnsbury Begin Date: Tuesday, September 30, 2014

Asset Group: Culverts End Date:

Asset Parent: - X ... Install Date: Tuesday, January 01, 1901

Display Code: 9320

Description: U002 DANVILLE 1.079 - PID 9320 Verification Status: SM - Sub Meter GPS

Asset Position: Right - Right

Comment:

Location

Route: 20 - US 2 RLM Date: 9/25/2014

RLM GIS - Decimal

Primary Location: GIS - VT - GIS - VT Total Distance: 0.000

Begin Town: 0303 - Danville End Town: 0303 - Danville

Begin MM: 1.079 .000-9.059 End MM: 1.079 .000-9.059

Route Dir: Both - Both directions Offset: 20.4000

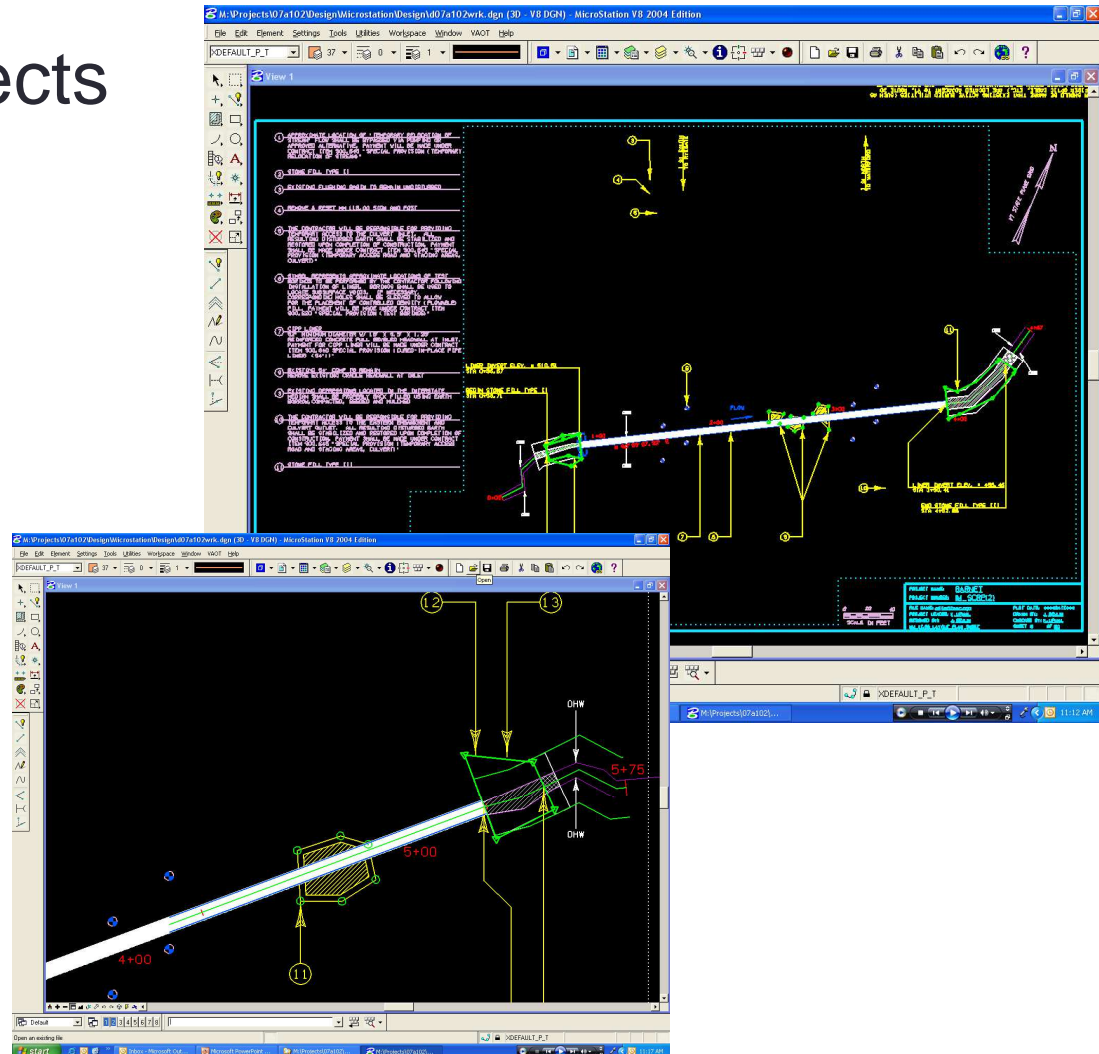
Server	Path	File	D
Z:	\OPS\TechnicalServic...	009320_01.jpg	7/2
Z:	\OPS\TechnicalServic...	009320_02.jpg	7/2

Display all child attachments

Add... Remove

# Roadway Design

- Small culvert projects
  - Lining
  - Replacement
- Critical Culvert identification





### Culvert Inventory

Select Culverts by Location    - OR -     Select Culverts by Culvert ID

Use the criteria below to generate a culvert listing, then click 'Preview':

District:

Town:

Route:

EB     WB

Mile Marker By:  Town MM     End to End MM

Start Mile Marker:

End Mile Marker:

Show Only Critical?:

# Reporting

Culvert Inventory - Report Viewer - Windows Internet Explorer

1 of 3    100%    Find | Next    Select a format    Export

### Culvert Locator Report

District= 3 | Town= MENDON | Route= | Start Town MM= 0 | End Town MM= 5.928 | Critical/Poor= Show All Culverts | Dirs= NB SB EB WB

ID	Route	ETE MM	Town	Town MM	Offset	Material	Height	Width	Length	Depth	Barrel Condition	Outlet Sediment	Outlet Erosion
<a href="#">30886</a>	US-4	E/W 021.341	MENDON	000.028	42.1	CGMP	54	54	186.8	5	GOOD	NONE	NONE
<a href="#">30895</a>	US-4	E/W 021.577	MENDON	000.264	33.4	CGMP	24	24	47.3	5	GOOD	MOD	NONE
<a href="#">30896</a>	US-4	E/W 021.624	MENDON	000.311	27.6	CGMP	18	18	146.0	5	GOOD	MOD	NONE
<a href="#">30897</a>	US-4	E/W 021.771	MENDON	000.458	33.0	CGMP	15	15	28.1	5	GOOD	MOD	NONE
<a href="#">30898</a>	US-4	E/W 021.836	MENDON	000.523	0.0	CGMP	18	18	95.3	5	GOOD	MOD	NONE
<a href="#">30899</a>	US-4	E/W 021.848	MENDON	000.535	38.3	CGMP	18	18	191.7	5	GOOD	LIGHT	NONE
<a href="#">30687</a>	US-4	E/W 022.099	MENDON	000.786	0.0	CGMP	24	24	100.1	5	FAIR	NONE	LIGHT
<a href="#">30688</a>	US-4	E/W 022.180	MENDON	000.867	0.0	RCP	24	24	89.1	5	FAIR	LIGHT	NONE
<a href="#">30690</a>	US-4	E/W 022.250	MENDON	000.937	0.0	RCP	18	18	83.1	15	POOR	NONE	NONE
<a href="#">30689</a>	US-4	E/W 022.251	MENDON	000.938	44.8	RCP	18	18	48.0	5	GOOD	NONE	NONE
<a href="#">30692</a>	US-4	E/W 022.292	MENDON	000.979	67.4	CPEP	24	24	86.0	5	UNKNW	NONE	NONE
<a href="#">30691</a>	US-4	E/W 022.293	MENDON	000.980	0.0	CGMP	24	24	87.0	15	GOOD	NONE	NONE
<a href="#">30693</a>	US-4	E/W 022.350	MENDON	001.037	0.0	RCP	18	18	72.2	5	FAIR	NONE	NONE
<a href="#">30694</a>	US-4	E/W 022.423	MENDON	001.110	0.0	RCP	24	24	71.4	5	GOOD	MOD	NONE

# Mapping



Small Culvert Inventory  
Agency of Transportation - Online Map Center  
Vermont.gov

Full Extent Basemaps

Legend  
Layers  
Help

**Small Culvert Inventory**

Welcome to VTrans' Small Culvert Inventory. This map represents the agency's ongoing effort to collect and track the tens of thousands of small culverts supporting Vermont roadway infrastructure.

By default, no features (culverts, inlets, outlets, drop inlets, access holes) are shown. Zoom into your area of interest until these features become visible. Once visible, you can click on a feature to display its information in the panes to the right of the map.

*Helpful hints:*  
Can use a zoom box to zoom-in (Shift +Left Mouse) and zoom-out ((Ctrl+Shift+Left Mouse).

Access Holes: 0  
Drop Inlets: 0  
Inlets: 0  
Outlets: 0  
Culverts: 1

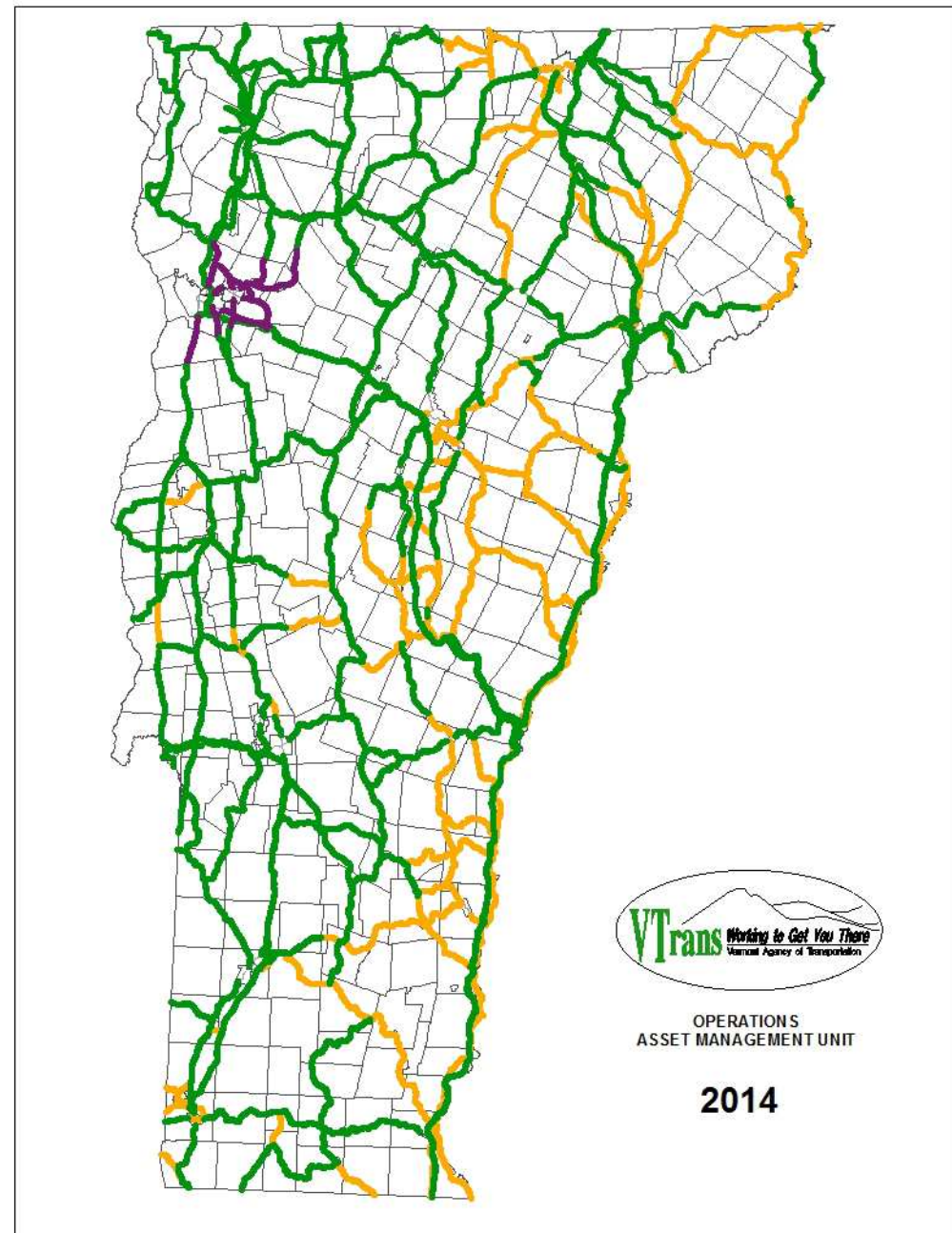
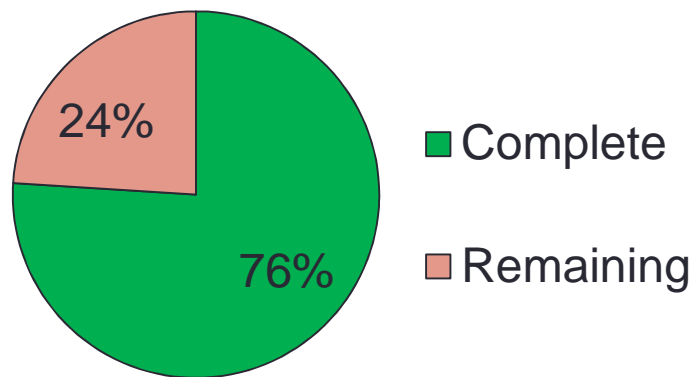
PID	13253 (show)
Structure Type	RND
System	CLOSE
Drain Type	LAT
Structure Type	RND
Material	RCP
Height	30
Width	30
Length (ft.)	189.4
Fill Depth	10
Elbows	UNKWN
Modifications	NONE
Last Inspection	10/17/2012 2:12:07 PM
Inspector	IMStanek
Barrel Condition	UNKNWN
Sink Holes	NONE
Road Settling	NONE
Pipe Separation	NONE
Comments	Null
Inventory Date	9/19/2013 7:00:03 PM
Install Date	1/1/1901
Culvert Report	Report

A Vermont Government Website Copyright © State of Vermont. All rights reserved  
Accessibility Policy Privacy Policy Disclaimer

- Desktop application
- Mobile viewer

# Inventory Progress

## Mileage Completed



# Current Conditions

